

HOUSING SOLUTIONS

spm-international.com



WALL PROTECTIONS
& HANDRAILS

SpM[®]
wall protection

WHO ARE WE?

Specialist in wall protections and handrails for 40 years, SPM, a Gerflor Group Company, develops innovative and decorative solutions to protect, enhance and ensure the sustainability of the walls for all your rental properties.

Entrance lobbies, staircases, corridors, wet rooms and kitchens, all these frequently used living areas need to be pleasant and practical. You must ensure their long-term protection, while taking into account the considerable constraints involved. That is why SPM solutions offer your premises long-term protection from impacts on walls, doors and angles. They also ensure that these areas are easy to clean and maintain.

Our solutions offer you a safe, welcoming living environment that meets your hygiene and safety requirements.



Are you planning a new build or looking to renovate an existing property? Are you tired of having to repaint the walls in the common areas every two years?

SPM solutions allow you to:

- Renovate and protect common areas (entrance lobbies, corridors, lifts, doors, trash rooms, staircases, etc.) and housing units, including kitchens and wet rooms, with a quick and easy-to-install design, even in occupied areas
- Transform your social and living spaces into a pleasant and warmer environment
- **Simplify maintenance in your buildings while reducing renovation costs**



WE OFFER SOLUTIONS THAT MEET YOUR REQUIREMENTS



RESISTANCE

- Resistance to impacts, shocks and scratches



LONGER SERVICE LIFE

- Increase the service life of premises
- Avoid repainting and repairing damaged areas



EASY AND QUICK INSTALLATION

- Suitable for installation by a technician
- Limited installation-related nuisances and disturbances: installation while in use (solvent-free glue, etc.)



MAINTENANCE

- Easy care and cleaning
- Lower maintenance costs



ATTRACTIVE AND DECORATIVE

- Wide range of colours and decorative cutouts
- Enhancement of premises through easier maintenance



INSTALLATION IN WET AREAS: H₂O SYSTEM

- Moisture resistant
- Perfect watertightness



INSTALLATION IN AREAS CONTAINING ASBESTOS: Safe'Cover SYSTEM

- Complies with the installation requirements in Sub-Section 4 of French asbestos regulations
- Rehabilitation while areas are in use



HYGIENE AND DECONTAMINATION

- 100% antibacterial (reports by Nosoco.tech)
- 100% decontaminable (tests by Anios and Institut Pasteur)
- 100% watertight with the hot-welded Decochoc H₂O / vinyl floor system



CONFORMITY

- Comply the French law for public buildings



ACCESSIBILITY

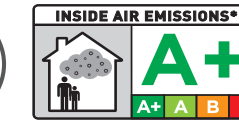
- Comply with the French interministerial circular Nr DGUHC 2007-53 dated 30/11/07



ENVIRONMENT

- Exemplary composition (no heavy metals, PBT-free, BPA-free, very low VOC emissions, etc.)
- 100% recyclable range
- Lower environmental impact during installation and use

EACH OF YOUR EXPECTATIONS IS MET



- According to French regulations -
* Information about the emission level of volatile substance in inside air, involving a toxic risk by inhalation, on a scale from A+ (very low emissions) to C (high emissions).

WATERTIGHTNESS IN WET AREAS

YOUR CONCERNS

- Effective watertight protection for covering walls and doors in wet rooms, such as bathrooms, toilets and kitchens
- Long-term solutions to moisture problems, leading to mould and saltpetre on walls, bacteria and unpleasant living conditions
- A fast, attractive and long-lasting solution for renovating damaged ceramic tiles with blackened joints, wall coverings damaged by water, limescale and cleaning products

OUR SOLUTIONS

Thanks to their water-repellent and impermeability qualities, Decochoc H₂O panels guarantee long-lasting protection for walls and doors in wet areas.

To ensure that the system is perfectly watertight, panels are thermowelded together and to the PVC coving using colour coordinated H₂O welding rods that have been specially developed to resist water and ambient moisture.

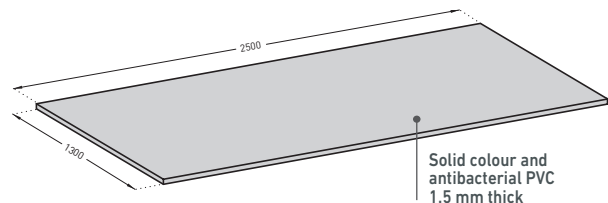
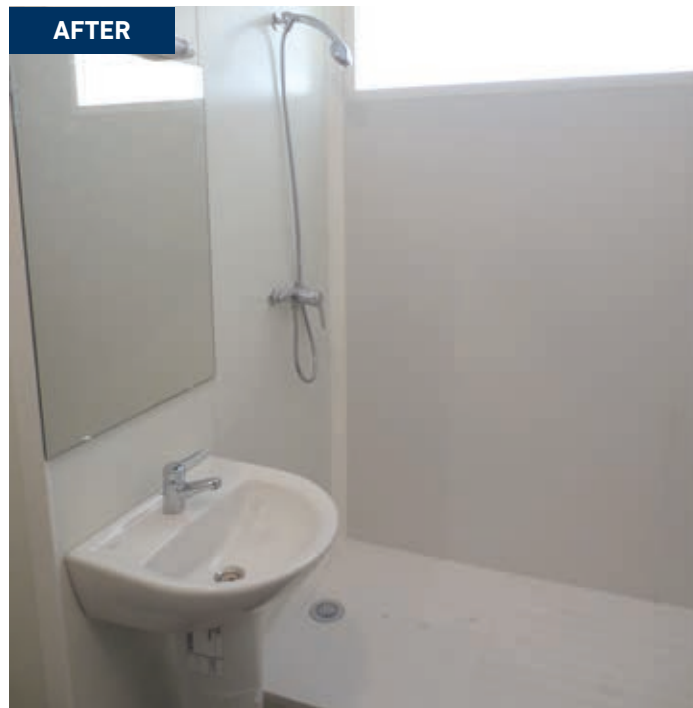
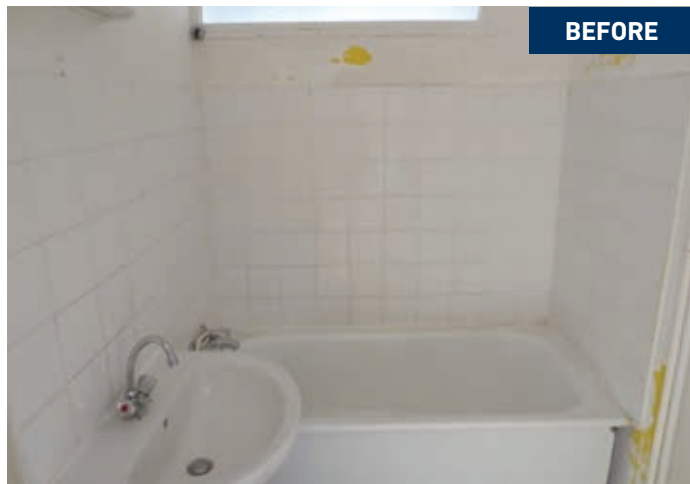


RENOVATION SOLUTIONS FOR WET AREAS

Decochoc H₂O panels have been especially developed by our Research and Development Department to **protect walls and doors from splashed water and damage caused by moisture.**

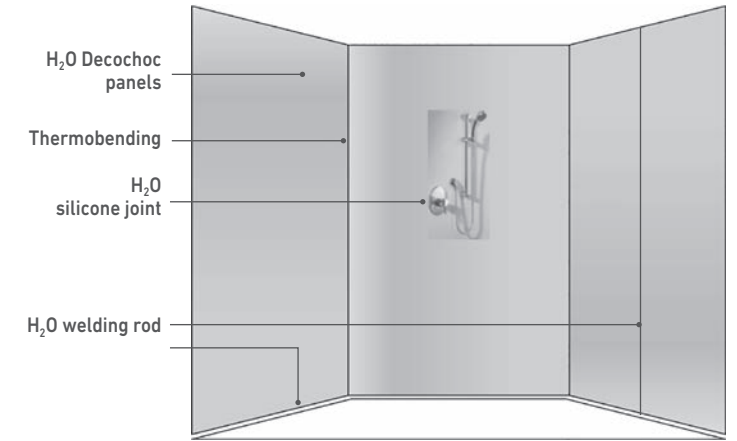
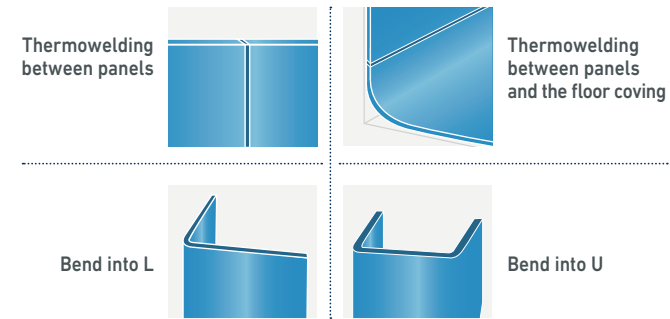
Their surface is slightly textured with a fine and matt **Hydr'X grain** that is perfect for wet areas thanks to its water-repellent qualities that minimise the development of limescale, whilst ensuring superior resistance to scratches. Its formulation has been specifically developed to ensure optimum fusion between the panels and the coving with the H₂O welding rod.

H₂O panels are fast and easy to fit on **all types of substrate (plasterboard, cement, ceramic tiles, etc.)**. They are imperishable, washable, hygienic, easy to clean and extend the infrastructure's service life, whilst complying with strict budgetary constraints.



H₂O SYSTEM

The integral H₂O thermowelded system between the panels and the coving ensures perfect watertightness and prevents any water ingress. The performance of the H₂O system in wet areas has been approved in France by CSTB and certified in Technical Approval no. 12/19-1782_V1. Any connections with other materials are made with a H₂O silicone joint.



- A Technical Approval (ATec) is issued following a testing and assessment procedure. The Technical Approval defines:
 - the area of application for the innovative product or process
 - the compliance with applicable laws and regulations

It builds trust by certifying that the behaviour of the different types of materials, products, components and processes implemented is suitable for safe and long-term use.

A Technical Approval is a guarantee of quality and approves the performance of the product or system.

FRENCH TECHNICAL APPROVAL (ATec) OR TECHNICAL ASSESSMENT (ATEX): WHAT ARE THE BENEFITS?

FOR THE CLIENT	FOR THE CONTRACTOR	FOR THE INSTALLATION COMPANY
<ul style="list-style-type: none"> • Reduce the cost of latent defects insurance • Guarantee the technical specifications of the products 	<ul style="list-style-type: none"> • Be insured when recommending products approved by building quality association 	<ul style="list-style-type: none"> • No extra insurance premiums at the worksite • Maintain a good rating with the insurer • Be secured to the quality of the product and its installation method

ATec TRAINING

As part of the ATec scheme, we provide the necessary certified training for working with our solutions.

Training sessions are held at the SPM site or Gerflor Technocentre (France). Contact us for dates and availabilities.



ASBESTOS PROBLEMS?

BACKGROUND AND REGULATION

Ever since asbestos was banned in 1997, in France, the process of dealing with asbestos in public and private buildings has become a Public Health priority, as well as a growing concern for clients, contractors and installation companies who are determined to protect their employees while gaining a foothold in an attractive market.

French decree 2012-639 of 4 May 2012 divides activities featuring a risk of exposure to asbestos into two categories:
 - SUB-SECTION 3: removal or encapsulation
 - SUB-SECTION 4: Covering

Please check your country regulation



SUB-SECTION 3 (SS3) & SUB-SECTION 4 (SS4)* WHAT ARE THE DIFFERENCES?

	ACTIVITIES SUBJECT TO SUB-SECTION 3	ACTIVITIES SUBJECT TO SUB-SECTION 4
TYPE OF WORK	<ul style="list-style-type: none"> Asbestos removal Encapsulation by self-levelling 	<ul style="list-style-type: none"> Covering of ceramic tiles and smooth surfaces
REGULATORY REQUIREMENTS	<ul style="list-style-type: none"> SS3-certified company (qualification no. 1552) SS3 training for employees by a certified organisation: 10 days for supervisors, 5 days for operators Check that the company is insured to carry out encapsulation work Mandatory dust measurements before and after installation (empty housing unit) and during installation if applicable (test or validation worksite) PPE must be worn An asbestos removal plan must be sent to the relevant enforcing authorities one month before Tenants must be rehoused during work 	<ul style="list-style-type: none"> No specific certification required SS4 training for employees by a certified organisation: 5 days for supervisors, 2 days for operators Check the company's damage insurance cover for materials containing asbestos Monitor asbestos dust according to the company's procedures No need to wear full respiratory protection if installation generates less than five asbestos fibres per litre of air The procedure must be sent only for the first installation to the relevant enforcing authorities: <ul style="list-style-type: none"> With jurisdiction for the fitter's place of residence if work < 5 days With jurisdiction for the worksite location if work > 5 days Installation is permitted in occupied areas
CONSEQUENCES	<ul style="list-style-type: none"> Significantly extended lead-times Considerable increase in costs compared to a conventional renovation 	<ul style="list-style-type: none"> Conventional lead-times Slight increase in costs compared to a conventional renovation

*French regulation

Safe'Cover SYSTEM

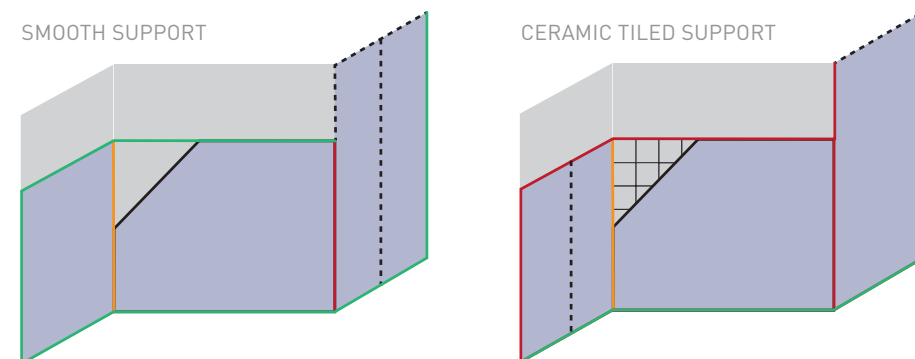
YOUR CONCERNS

- An approved and effective solution for renovating walls containing asbestos in occupied collective and private areas
- A simple, cost-effective, long-term and stylish solution for renovating ceramic tiles and smooth walls that have become damaged over time
- A fast, long-lasting and watertight solution for quickly getting the housing unit back on the rental market

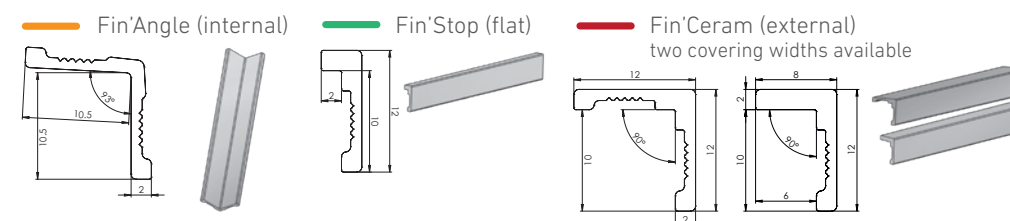
OUR SOLUTIONS

Safe'Cover: these are complete, innovative and unique solutions for rooms containing asbestos, allowing activities subject to Sub-Section 4 (French regulation). As such, they represent a simple and cost-effective solution for renovations in occupied areas. The rigid antibacterial PVC panels are scratch-resistant and cover walls containing asbestos, while concealing any defects of the support. Dust measurements comply with French Public Health and Labour Code regulations.

DIFFERENT SOLUTIONS ACCORDING TO THE SUPPORT:



COVERING AND FINISHING PROFILES IN ANODISED ALUMINIUM



FINISHING SOLUTIONS

- Silicone joint / Welding rod

TRAINING



The necessary installation and welding training is provided by our technicians at the SPM site or Gerflor Technocentre (France). Contact us for dates and availabilities.

CONTRACTORS AND CARPENTERS: YOUR OBLIGATIONS

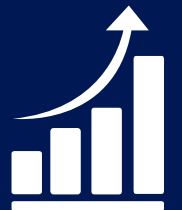
Please check your country regulations



TYPE AND SUB-SECTION
 The company is responsible for determining whether it is qualified for SS3 or SS4, depending on the type of work required.



TRAINING
 The company must undergo Sub-Section 4 training with an independent approved organisation offering a specific module on how to cover asbestos.



PROCEDURE
 Preparation of the operating procedure based on the template provided by SPM and oversight of the regulatory process for obtaining approval. The procedure is sent to the relevant enforcing authorities.



PERSONAL PROTECTIVE EQUIPMENT
 Definition of the PPE and CPE (personal / collective protective equipment) according to the three levels of protection.



ASBESTOS TRASH MANAGEMENT
 according to the client's recommendations.



WORK EXECUTION
 using SPM SS4-compatible covering solutions.

SOLUTIONS FOR EVERY SPACE

CORRIDORS

 P.12-13

 P.16-17

KITCHENS

 P.19

 P.20

CAR PARKS

 P.15

 P.16-17

TRASH ROOMS

 P.15

 P.16-17

BATHROOMS & SANITARY ACCOMMODATIONS

 P.18

 P.21

STAIRCASES & STAIRWELLS

 P.14

 P.16-17

LIFTS

P.15

ENTRANCE LOBBIES

 P.12-13

 P.16-17

HOUSING SOLUTIONS - SELECTION GUIDE



	WALL PROTECTION								CORNER PROTECTION						DOOR PROTECTION						HANDRAILS			IP*														
	Linea'Punch Neo	Impact / Combo'Punch	Contact / Combo'Clad	Decochoc	Decosmic	Decowood / Decotrend	Decochoc H ₂ O, Decowood H ₂ O and Decotrend H ₂ O	Decoprint	Plac'Inox	Cornea	Corneaflex	Combo'Corner	Linea'Flex	Protecta 2 / Combo'Flex	Profila / Combo'Line	Decosmic corner L-bent (in line with walls)	Decowood / Decotrend corner L-bent (in line with walls)	Profil'Inox	Complete doors (2 sides)	Half-height door	Foot-height door	Half-height decorative door	Handplates	Half-height door - Inlaid signage	Bends, edges and frames	Plac'Inox	Linea'Touch - PVC sheathed	Linea'Touch - Decowood	Linea'Touch - Anodised	Escort - PVC sheathed	Escort - Decowood	Escort - Anodised	Elasto'Flex 100V	Elasto'Punch 200E	Elasto'Punch 100D			
Entrance lobbies			●	●	●	●	○					●	●	○	●	●	●	●	●	●	●	●	●	●														
Corridors			●	●	●	●	○					●	●	○	●	●		●	●	●	●	●	●	●														
Stairwells			●	●	●	●	○					●	●	○	●	●	●	●	●	●	●	●	●	●		●	○	○	●	○	○							
Lifts				●	●	●	○	○																		●	●	○	○	○	○							
Trash rooms	●	●		●	○	○		○		●	●	●	○	○			●	●	●	●	●	●	●	●	●										●	●	●	
Bathrooms & sanitary accommodations				○	○	○	●												○					○														
Kitchens				○	○	○	●	●																														
Car parks																																				●	●	●

* Industrial protection



	INSTALLATION		WALL PROTECTION								FIXING			FINISHING		
	Installation (SS4)	Installation (SS4) / removal (SS3)	Decochoc	Decosmic	Decowood / Decotrend	Decochoc H ₂ O	Decowood H ₂ O / Decotrend H ₂ O	Decochoc H ₂ O Grip	Decowood H ₂ O Grip / Decotrend H ₂ O Grip	Decoprint	Acrylic glue	Fix&Move adhesive	Safe'Grip tape	Fin'Ceram / Fin'Stop / Fin'Angle	Fin'Color	Fin'Alu
All supports		■	●	●	●	○	○			○	●			●	●	●

Safe'Cover

COLLECTIVE AREAS CONTAINING ASBESTOS (P.16-17)

All supports		■	●	●	●	○	○			○	●			●	●	●
--------------	--	---	---	---	---	---	---	--	--	---	---	--	--	---	---	---

PRIVATE AREAS CONTAINING ASBESTOS (P.20-21)

Ceramic tiled support Wet areas	■		○	○	○	●	●			○		●		●		
Ceramic tiled support Wet or dry areas		■	●	●	●	●	●			○	●			●		
Smooth support Wet or dry areas	■			●	●			●	●			●		●		
All supports Dry areas		■	●	●	●	○	○			○	●			●	●	●

● SPM recommendation ○ Other possible solutions

i The Safe'Cover covering solutions developed by SPM comply with the requirements of Sub-Section 4 of French asbestos regulations (SS4) concerning installation and removal. Panels are fixed using Fix&Move adhesive or Safe'Grip tape.

The solutions where panels are fixed with acrylic glue also comply with the requirements of Sub-Section 4 (SS4). Removal of the product is subject to the requirements of Sub-Section 3 (SS3).



For installation procedures, refer to the Installation Guide for Housing Solutions

COLLECTIVE AREAS

ENTRANCE LOBBIES - CORRIDORS

In entrance lobbies, the intensive or repeated traffic of people is a major source of significant and premature wear and tear.

YOUR CONCERNS

- Protect these areas from deterioration
- Make maintenance easier for these frequently-used places: impact of keys, friction from bags, stains around handles, deterioration due to moves, wear and tear
- Extend the life of these infrastructures, while improving your budget
- Make these collective and meeting places more convivial and welcoming



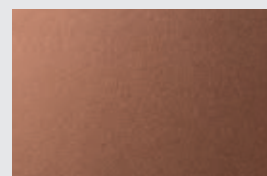
OUR SOLUTIONS

The solutions developed by SPM protect your premises and provide resistance to impacts and friction, while making for a welcoming environment.

WALL PROTECTION



DECOCHOC
Protection and covering panel
Thickness 2 mm



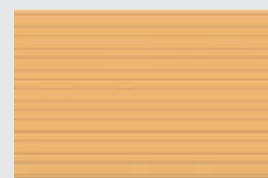
DECOSMIC
Protection and covering panel
Thickness 2 mm



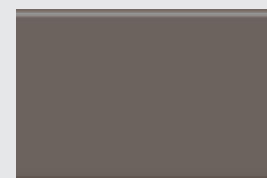
DECOWOOD / DECOTREND
Decorative protection and covering panels
Thickness 2 mm



DECOPRINT
Decorative covering panel with customized digital printing
Thickness 1 mm



CONTACT
Adhesive protection plate
H. 350 / 200 mm
Thickness 2.5 mm



COMBO'CLAD
Adhesive protection plate
H. 200 / 150 mm
Thickness 3 mm

CORNER PROTECTION



LINEA'FLEX
Flexible adhesive corner protector with variable angle endcap



PROTECTA 2
Variable angle flexible adhesive corner protector



PROFILA
90° adhesive corner protectors



COMBO'LINE
90° adhesive corner protectors



COMBO'FLEX
Variable angle flexible adhesive corner protector

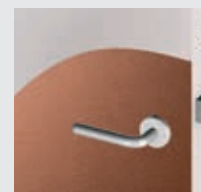
DOOR PROTECTION



Foot-height door



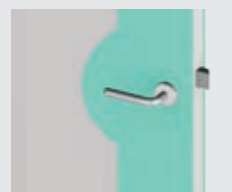
Half-height door - straight cut



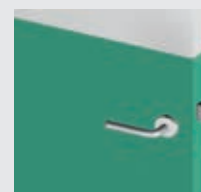
Half-height door - decorative cutout



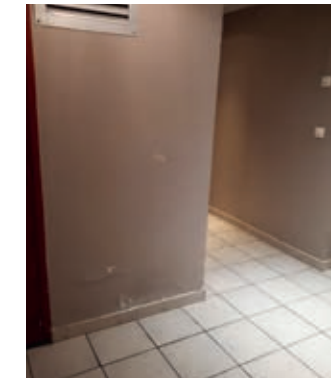
Half-height door - inlaid signage



Handplates



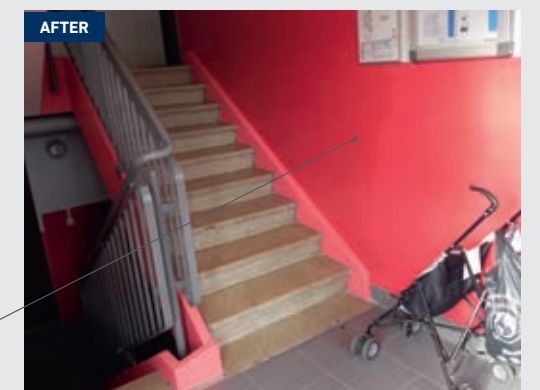
Edges and frames



Decowood

Handplate

Foot-height door



Decochoc



Decochoc

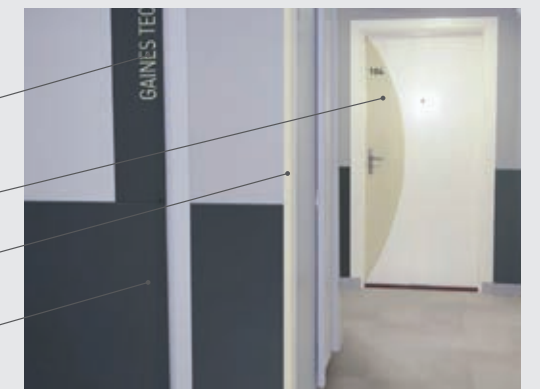
Inlaid signage

Handplate

Decowood

Protecta 2

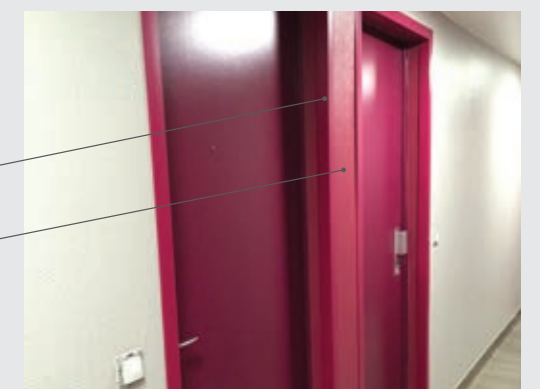
Decochoc



Profila

Profila

Decochoc



COLLECTIVE AREAS

STAIRCASES & STAIRWELLS

Staircases and stairwells are frequently-used areas where safety needs to be guaranteed.

YOUR CONCERNS

- Protect these areas from deterioration
- Make movement safe within these areas (handrails)
- Make regular maintenance easier for these frequently-used places
- Extend the life of these infrastructures, whilst complying with strict budgetary constraints
- Upgrade the areas to accessibility standards and remove aggressive corners



LIFTS, TRASH ROOMS, CAR PARKS

In collective housing, lifts, trash rooms, bike rooms and car parks must comply with certain criteria in terms of protection, signage and hygiene.

YOUR CONCERNS


- Prevent deterioration of these areas (impact, wear and tear, friction, etc.)
- Comply with hygiene criteria
- Make regular maintenance easier for these places
- Keep these infrastructures in good condition, whilst optimising your budget
- Make long-lasting signage an integral part of these living environments



OUR SOLUTIONS

SPM provides innovative solutions that meet all your needs in terms of protection, signage and hygiene. The wall protection range is completed by SPM handrails. Designed by ergonomists, they are used to help with guiding and movement of people, especially in stairwells.

WALL PROTECTION

		
DECOCHOC Protection and covering panel Thickness 2 mm	DECOSMIC Protection and covering panel Thickness 2 mm	DECOPRINT Decorative covering panel with customized digital printing Thickness 1 mm
		
DECOWOOD / DECOTREND Decorative protection and covering panels - Thickness 2 mm	CONTACT Adhesive protection plate H. 350 / 200 mm Thickness 2.5 mm	COMBO'CLAD Adhesive protection plate H. 200 / 150 mm Thickness 3 mm
		
COMBO'PUNCH Curved protection rail H. 200 / 125 / 100 mm	LINEA'PUNCH NEO Flat and beveled flat protection rail H. 180 mm	IMPACT Curved protection rail H. 200 / 120 / 60 mm

Inlaid signage

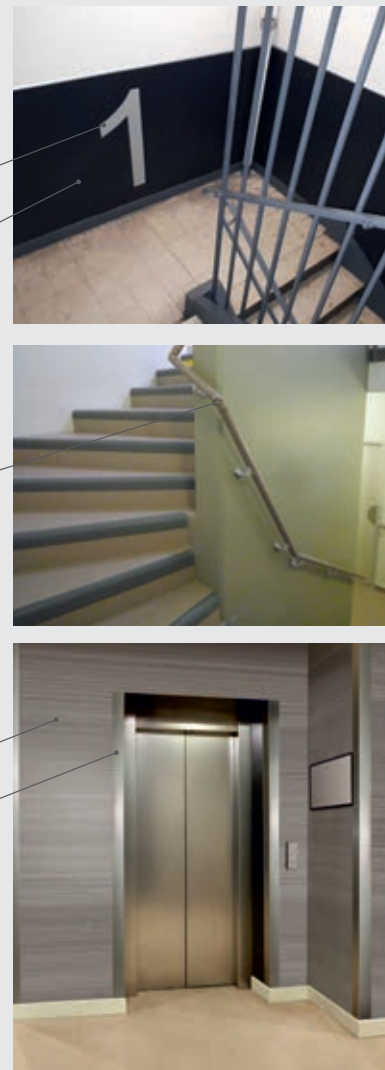
Decochoc

"Customise"
your panel




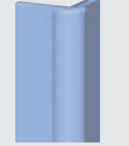

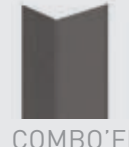

Escort
Rapid'Angle

Decowood

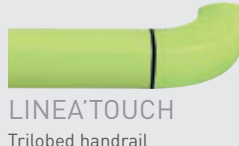
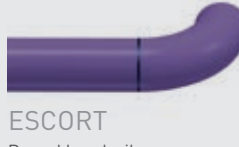

Profil'Inox



CORNER PROTECTION

	
LINEA'FLEX Flexible adhesive corner protector with variable angle endcap	PROTECTA 2 Variable angle flexible adhesive corner protector
	
PROFILA 90° adhesive corner protectors	CORNEA 90° corner protector with a strip on an aluminium core
	
COMBO'LINE 90° adhesive corner protectors	COMBO'FLEX Variable angle flexible adhesive corner protector
	
PROFIL'INOX 90° adhesive corner protectors	

HANDRAILS AND ACCESSORIES


LINEA'TOUCH Trilobed handrail

ESCORT Round handrail

RAPID'ANGLE® Rotating & variable 3D angle (80° to 180°)

Inlaid signage

Decochoc

Impact

Elasto'Punch

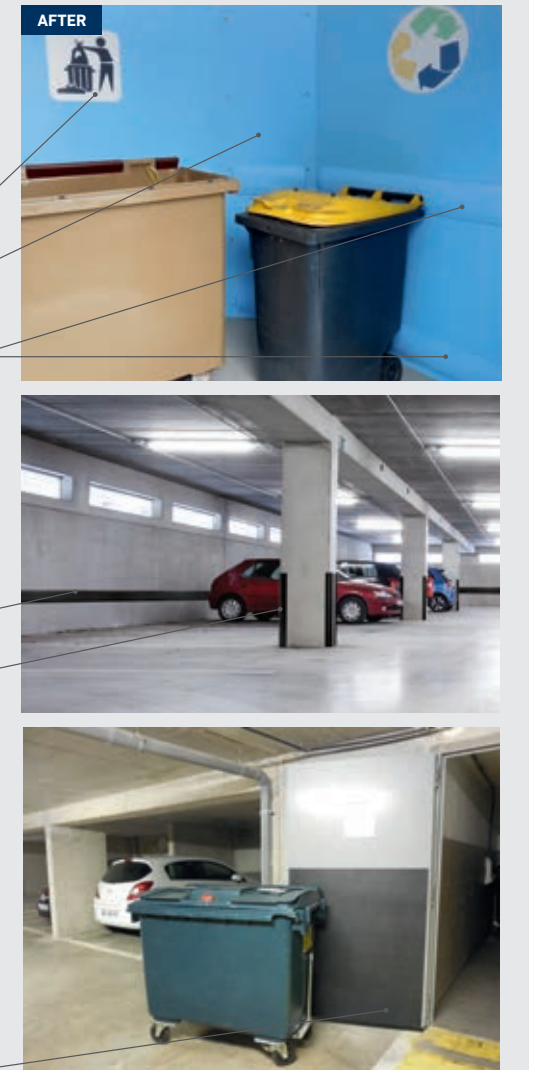
Elasto'Flex

SPECIFIC PROTECTION


ELASTO'PUNCH Protection rail H. 100 / 200 mm

ELASTO'FLEX Variable angle corner protector

Decochoc



Safe'Cover SYSTEM

RENOVATION OF WALLS IN AREAS CONTAINING ASBESTOS ON ALL SUPPORTS

In France, asbestos is a widespread problem in constructions built before 1997 and continues to be a sensitive issue, especially in the social housing sector.

Economical and quick to install, the **Safe'Cover system is suitable for renovating asbestos walls in collective areas according to Sub-Section 4 of French asbestos regulations**: our protection and covering panels are fixed directly to the asbestos support ; optional finishing profiles are available.

Panels are removed in accordance with the requirements of Sub-Section 3 of French asbestos regulations. *Please check your country regulations*



BENEFITS +

- **INSTALLATION ACCORDING TO SUB-SECTION 4 OF FRENCH ASBESTOS REGULATIONS**
- **RENOVATIONS WHILE AREAS ARE IN USE**
- **QUICK AND EASY TO INSTALL**

WALL PROTECTION



DECOCHOC
Protection and covering panel
Thickness 2 mm



DECOSMIC
Protection and covering panel
Thickness 2 mm



DECOWOOD / DECOTREND
Decorative protection and covering panels
Thickness 2 mm



DECOPRINT
Decorative covering panel with customized digital printing
Thickness 1 mm

FIXING AND FINISHING



SPM ACRYLIC GLUE
Solvent-free - simple bonding
(300 to 350 g required per m²)
Available in 6 or 14 kg drum



HYBRID'FIX MASTIC
(grey colour)
400 ml cartridge



H₂O SILICONE JOINT
(matching colours)
310 ml cartridge
(about 12 lm of joint)



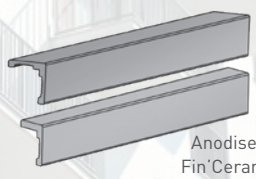
H₂O WELDING ROD
(matching colours)
4 mm diameter,
100 m roll.
Hot fixing with a welding machine



FIN'COLOR
Finishing or jointing profiles in antibacterial PVC (matching colours).
L. 3.00 m



FIN'ALU
Finishing or jointing profiles in anodised aluminium.
L. 3.00 m



Anodised Fin'Ceram

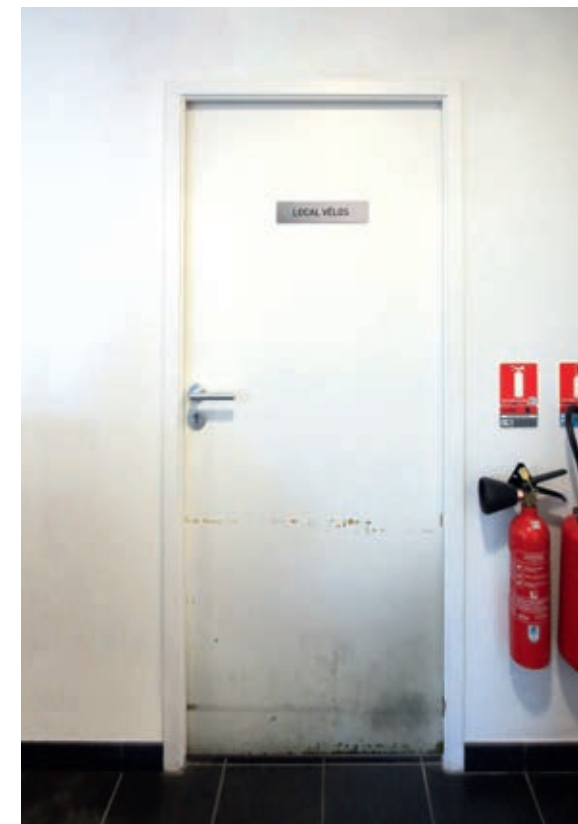


Anodised Fin'Stop



Anodised Fin'Angle

FINISHING PROFILES
In anodised aluminium
L. 3.00 m



Profil'Inox

Inlaid signage

Decowood



Profila

Decochoc

PRIVATE AREAS

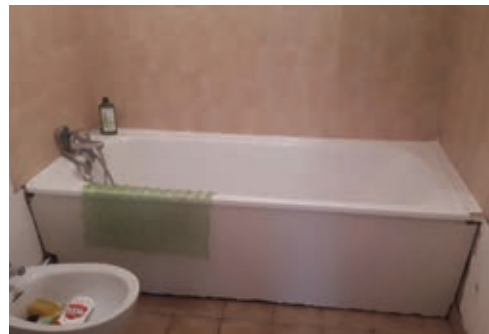
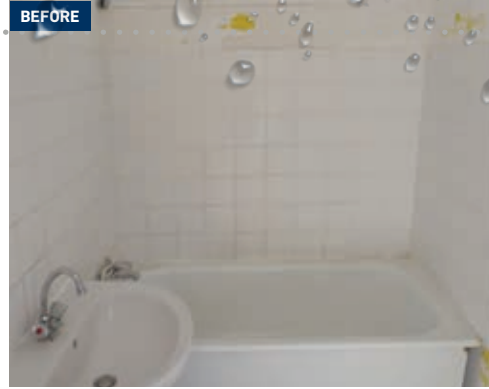


BATHROOMS & SANITARY ACCOMMODATIONS

In these places, which are subject to significant moisture levels and the frequent use of cleaning products, it is essential that walls are protected with effective, watertight, easy-to-clean protection.

YOUR CONCERNS

- Guarantee these areas are watertight
- Comply with hygiene criteria
- Extend the life of these places, whilst complying with strict budgetary constraints
- Be able to rapidly renovate an apartment between two tenants



KITCHENS

Kitchen walls require long-term protection as they are subject to installation of furniture, electrical appliances and fat squatters.

YOUR CONCERNS

- Ensure these places are kept free of moisture
- Protect walls from stains and impacts caused by household appliances
- Keep these places in good condition, whilst staying within your budget
- Be able to rapidly renovate a vacated apartment

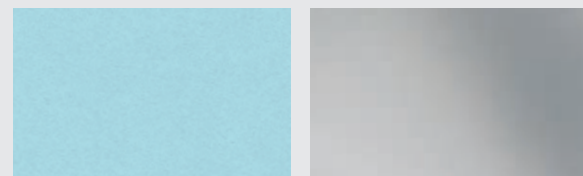


OUR SOLUTIONS

SPM solutions provide long-term protection for walls and doors, whilst ensuring perfect watertightness in wet areas with a silicone joint or welding rod. SPM provides antibacterial, resistant and 100% watertight solutions, for highly-effective protection from stains, moisture and impacts.

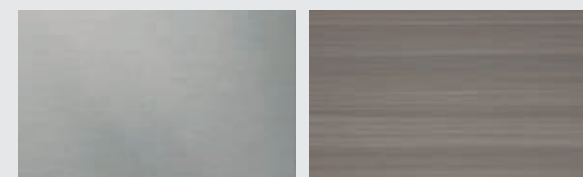


WALL PROTECTION



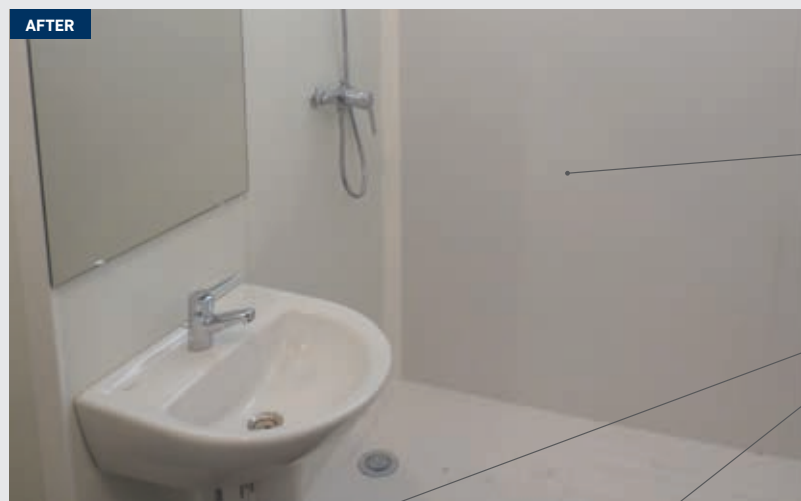
DECOCHOC H₂O
Protection and covering panel for wet areas
Thickness 1.5 mm

PLAC'INOX
Stainless steel protection plate
Thickness 10/10 grade



DECOTREND H₂O
Decorative protection and covering panel for wet areas
Thickness 2 mm

DECOWOOD H₂O
Decorative protection and covering panel for wet areas
Thickness 2 mm



Decochoc H₂O

Decochoc H₂O with bead



Decochoc H₂O

Plac'Inox

Decotrend H₂O



Decochoc H₂O



PRIVATE AREAS

BENEFITS +

- INSTALLATION AND REMOVAL ACCORDING TO SUB-SECTION 4 OF FRENCH ASBESTOS REGULATIONS
- RENOVATIONS WHILE AREAS ARE IN USE

- INSPECTABLE SYSTEM
- POSSIBILITY OF CHANGING THE DECOR



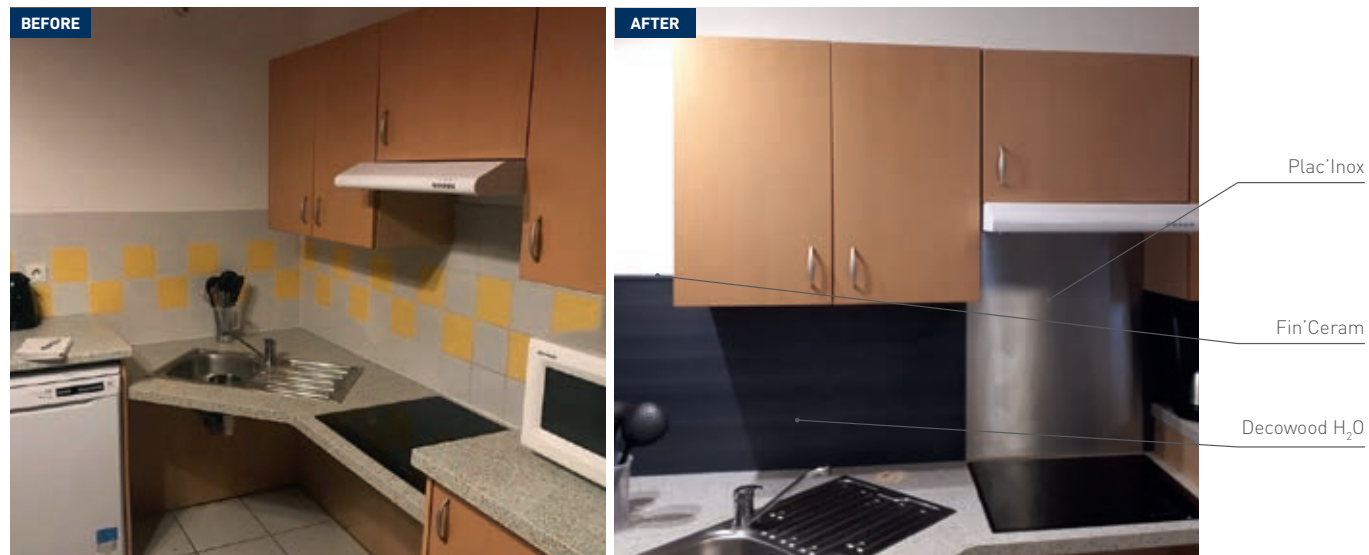
Safe'Cover SYSTEM

COVERING CERAMIC TILES IN WET AREAS CONTAINING ASBESTOS



For wet environments containing asbestos, such as bathrooms, kitchens and sanitary accommodations, SPM has developed a simple, long-lasting and aesthetic solution for renovating ceramic tiled surfaces that have been damaged over time. Using the Fix&Move adhesive, the H₂O protection and covering panels for wet areas, with their proven water-repellent and impermeability qualities, can easily be fitted and replaced according to the requirements of Sub-Section 4 of French asbestos regulations. *Please check your country regulations.*

Anodised aluminium finishing profiles are fixed with Hybrid'Fix mastic and a SPM silicone joint to ensure a long-lasting waterproof finish.



Safe'Cover SYSTEM

COVERING SMOOTH SUPPORTS IN WET OR DRY AREAS CONTAINING ASBESTOS

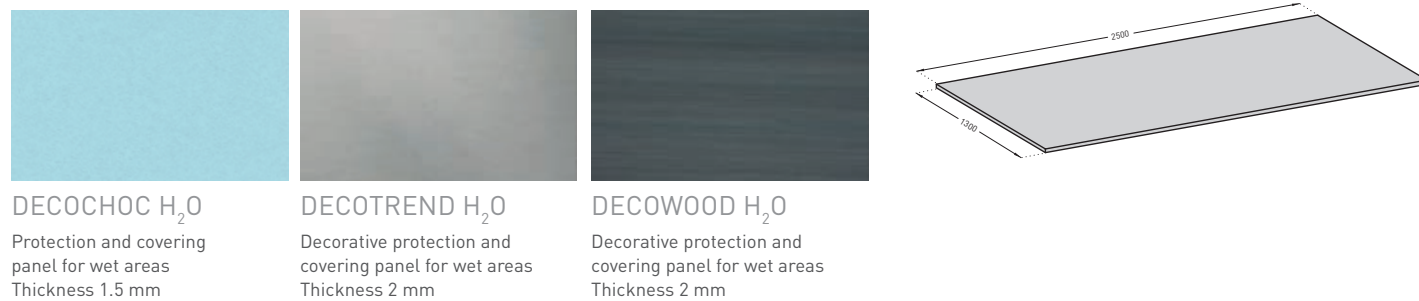
For wet or dry areas containing smooth supports and asbestos, SPM has developed an innovative, unique and watertight covering solution that can be fitted in accordance with Sub-Section 4 of French asbestos regulations. *Please check your country regulations.*

The Decochoc H₂O Grip and Decowood/Decotrend H₂O Grip protection and covering panels with their textile backing can easily be fitted and repositioned using the Safe'Grip self-gripping tape.

Anodised aluminium finishing profiles are fixed with Hybrid'Fix mastic and a SPM silicone joint to ensure a long-lasting waterproof finish.

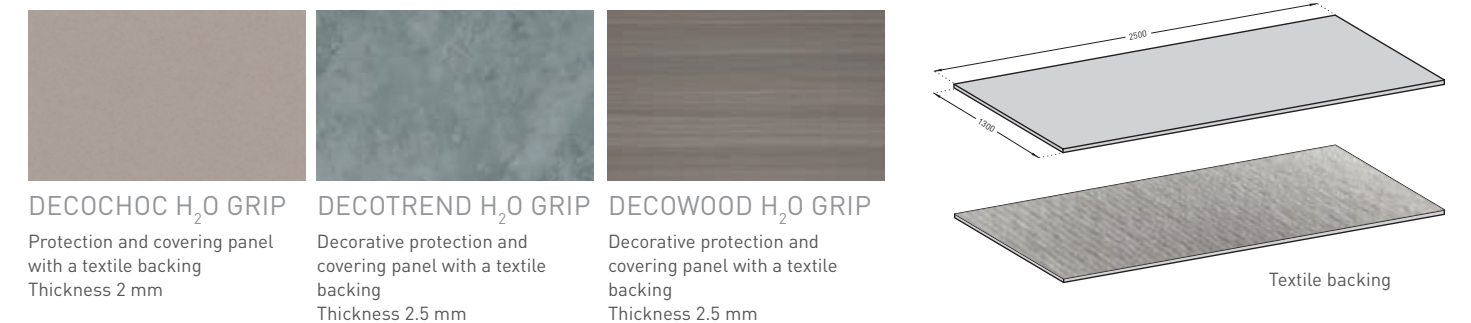


WALL PROTECTION



- DECOCHOC H₂O**
Protection and covering panel for wet areas
Thickness 1.5 mm
- DECOTREND H₂O**
Decorative protection and covering panel for wet areas
Thickness 2 mm
- DECOWOOD H₂O**
Decorative protection and covering panel for wet areas
Thickness 2 mm

WALL PROTECTION



- DECOCHOC H₂O GRIP**
Protection and covering panel with a textile backing
Thickness 2 mm
- DECOTREND H₂O GRIP**
Decorative protection and covering panel with a textile backing
Thickness 2.5 mm
- DECOWOOD H₂O GRIP**
Decorative protection and covering panel with a textile backing
Thickness 2.5 mm

FIXING AND FINISHING

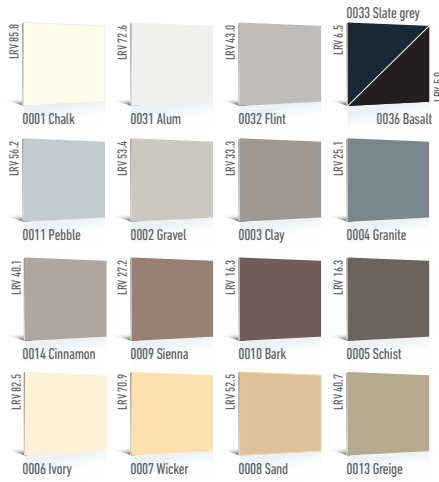


- FIX&MOVE ADHESIVE**
For fixing H₂O panels to ceramic tiles surfaces
50 m tiled
- HYBRID'FIX SEALANT**
(grey colour)
400 ml cartridge
- H₂O SILICONE JOINT**
(matching colours)
310 ml cartridge (about 12 lm of joint)
- PLAC'INOX**
Brushed stainless steel protection plate.
To improve safety in areas exposed to the heat of cooktops or gas stoves in kitchens.
Refer to the Installation Guide.
- H₂O WELDING ROD**
(matching colours)
4 mm diameter,
100 m roll
Hot fixing with a welding machine
- SAFE'GRIP SELF-GRIPPING TAPE**
Stick on a smooth support for fixing H₂O Grip panels with a textile backing
25 m roll
- FINISHING PROFILES**
In anodised aluminium - L. 3.00 m
Anodised Fin'Ceram
Anodised Fin'Stop
Anodised Fin'angle

COLOUR CHART

SPM offers a palette of colours, developed with its partners, architects, interior designers, users, etc. to inspire the creation of authentic and distinctive spaces.

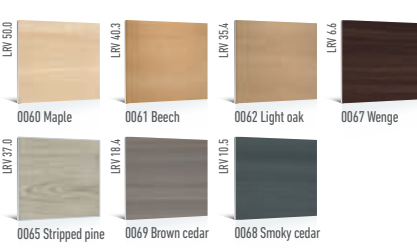
NATURAL



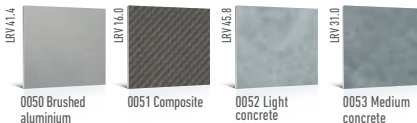
COLOUR



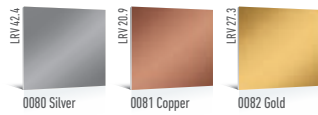
DECOWOOD



DECOTREND



DECOSMIC



PRODUCT SELECTION

WALL PROTECTION

DECOCHOC
Protection and covering panel
3 m x 1.30 m
Thickness 2 mm
Available in 33 colours

DECOTREND H₂O
DECOWOOD H₂O
DECOCHOC H₂O*
Decorative protection and covering panels for wet areas
2.50 m x 1.30 m
Thickness 2 mm / *Thickness 1.5 mm
Available in 5 colours and 1 decor (+ 7 colours and 3 decors on request)

DECOSMIC
Protection and covering panel
3 m x 1.30 m
Thickness 2 mm
Available in 3 metallic colours

DECOTREND / DECOWOOD
Decorative protection and covering panel
3 m x 1.30 m
Thickness 2 mm
Available in 7 wood effect decors and 4 trend decors

PLAC'INOX
Made-to-measure protection plate
Max. H 1.25 m / L 2.50 m
Thickness 10/10 grade
Brushed finish

DECOPRINT
Decorative covering panel with customized digital printing
Max. 2.90 m x 1.20 m
Thickness 1 mm

FIN'COLOR
Finishing or jointing profiles in antibacterial PVC (matching colours).
L. 3.00 m

FIN'ALU
Finishing or jointing profiles in anodised aluminium. L. 3.00 m

FINISHING PROFILES

FIN'CERAM
in anodised aluminium. L. 3.00 m

FIN'STOP
in anodised aluminium. L. 3.00 m

FIN'ANGLE
in anodised aluminium. L. 3.00 m

LINEA'PUNCH NEO
Protection rail
H. 180 mm
Available in 31 colours

IMPACT
Protection rail
H. 200/120/60*
*Available in 31 colours (*5 colours)*

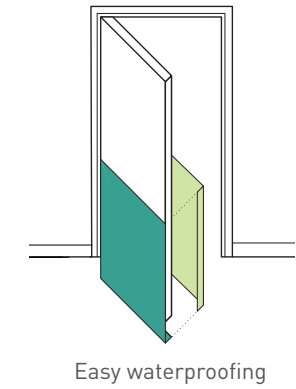
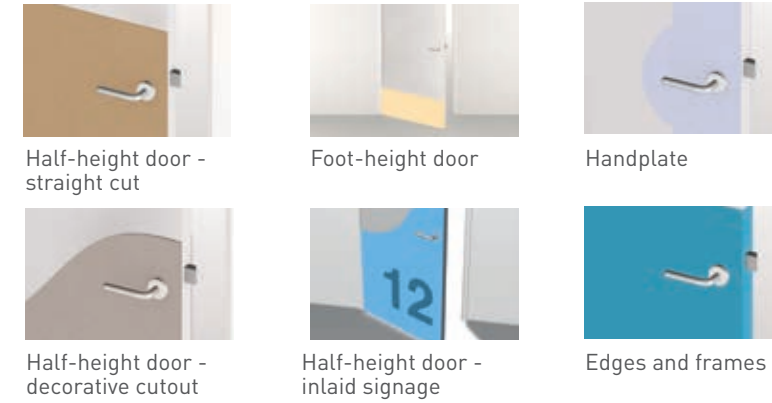
CONTACT
Adhesive protection plate
H. 350** / 200 mm
*Available in 31 colours (**15 colours)*

COMBO'PUNCH
Protection rail
H 200 / 125 / 100 mm
Available in 4 colours

COMBO'CLAD
Adhesive protection plate
H 200 / 150 mm
Available in 4 colours

DOOR PROTECTION

In infrastructures open to the public, doors are subjected to harsh treatment. SPM has developed a range of protection panels and handplates. Available cut or bent in L or U shapes, they are designed to fit all frames.



CORNER PROTECTION

ADHESIVE CORNER PROTECTORS

LINEA'FLEX
80° to 115° flexible adhesive corner protector with variable-angle endcap
Available in 33 colours

PROTECTA 2
50° to 155° flexible adhesive corner protector with strip
Available in 33 colours

PROFILA 50 AND 30
90° adhesive finishing corner protectors
Available in 33 colours

PROFIL'INOX 50 AND 30
90° adhesive corner protectors in brushed stainless steel
Height 2.50 m
Brushed finish

COMBO'LINE 75, 50 AND 25
90° adhesive corner protectors
Available in 4 colours

COMBO'FLEX
Variable angle flexible adhesive corner protector
Available in 4 colours

CORNER PROTECTORS ON AN ALUMINIUM CORE

CORNEA
90° corner protector with strip on aluminium core
Available in 31 colours

CORNEAFLEX
135° or variable-angle corner protector with strip on aluminium core
Available in 5 colours

COMBO'CORNER
90° corner protectors on aluminium core
Available in 4 colours

HANDRAILS

LINEA'TOUCH
Trilobed handrail in refined or reinforced versions
width 40 mm

ESCORT
Round 40 mm diameter handrail

PVC SHEATHED
Available in 31 colours

DECOWOOD
Available in 6 wood effect decors

ANODISED
Available in anodised silver

ACCESSORIES

RAPID'ANGLE®
Rotating & variable 3D angle (80° to 180°) **PATENTED**

For ESCORT

For LINEA'TOUCH

SPECIFIC PROTECTION

ELASTO'FLEX 100V
45° to 135° variable angle corner protector
Available in 1 colour

ELASTO'PUNCH 200E AND 100D
Protection rail, H. 200/100 mm
Available in 1 colour

spm-international.com

**PANELS
HANDRAILS
PROTECTION RAILS
CORNER PROTECTION**

ASIA: Gerflor Asia

Tel: +86 21 6357 8818 - Fax: +86 21 6357 8998
e-mail: gerflorasia@gerflor.com

AUSTRALIA/NEW ZEALAND: Gerflor Australasia Pty. Ltd
Australia Tel: 1 800 060 785 - New Zealand Tel: 0 800 630 119
e-mail: gerflor@gerflor.com.au

AUSTRIA/SWITZERLAND: Webamed-Spm GmbH
Tel: +49 2351 954550 - Fax: +49 2351 954580
e-mail: info@webamed-spm.de - webamed-spm.de

BELGIUM/LUXEMBURG: Gerflor Benelux
Tel: +32 (0)3 766 42 82 - Fax: +32 (0)3 766 29 14
e-mail: gerflorbel@gerflor.com

CANADA: Gerflor International
Tel: +1 438 333 0752 - Fax: +1 438 380 5425
e-mail: gerflorcanada@gerflor.com

CHINA: Gerflor floorings (China) Co. Ltd.
Tel: +86 21 6357 8818 - Fax: +86 21 6357 8998
e-mail: gerflorchina@gerflor.com

FINLAND: Gerflor Oy
Tel: +358 (0) 10 6 17 5150 - Fax: +358 (0) 10 617 5152
e-mail: info@gerflor.fi

FRANCE: SPM International
Tel: +33 (0)5 34 39 41 00 - Fax: +33 (0)5 34 39 40 10
e-mail: export@spm.fr

GERMANY: Webamed-Spm GmbH
Tel: +49 2351 954550 - Fax: +49 2351 954580
e-mail: info@webamed-spm.de - webamed-spm.de

ITALY: Gerflor S.p.A.
Tel: +39 02 90 40 10 - Fax: +39 02 90 42 74 84
e-mail: gerfloritalia@gerflor.com

LATIN AMERICA (Brazil): Gerflor América Latina
Tel: +55 11 38 48 20 20
e-mail: gerflor@gerflor.com.br

MIDDLE EAST: Gerflor Middle East
Tel: +966 13 847 1779 - Fax: +966 13 847 1781
e-mail: info@gerflorme.com

NETHERLANDS: Gerflor Benelux
Tel: +31 (0)40 266 17 00 - Fax: +31 (0)40 257 46 89
e-mail: gerflornl@gerflor.com

OTHER COUNTRIES: SPM International
Tel: +33 (0)5 34 39 41 00 - Fax: +33 (0)5 34 39 40 10
e-mail: export@spm.fr

POLAND: Gerflor Polska Sp z o.o
Tel: +48 61 823 34 01 - Fax: +48 61 823 34 33
e-mail: info@gerflor.pl

PORTUGAL: Gerflor Iberia, SA
Tel: +351 21 843 95 49 - Fax: +351 21 846 55 44
e-mail: gerflorportugal@gerflor.com

RUSSIA: Gerflor zao
Tel./Fax: +7 495 785 23 71
e-mail: gerflorrussia@gerflor.ru

SCANDINAVIA: Gerflor Scandinavia a.s.
Tel: +47 64 95 60 70 - Fax: +47 64 95 60 80
e-mail: gerflorscand@gerflor.no

SPAIN: Gerflor Iberia, SA
Tel: +34 91 653 50 11 - Fax: +34 91 653 25 85
e-mail: gerfloriberia@gerflor.com

USA: Gerflor North America
Tel: 877 GERFLOR (437 3567) - Fax: 847 394 3753
e-mail: info@gerflorusa.com



Committed to sustainable development

A company of **Gerflor**

Spm[®]
wall protection