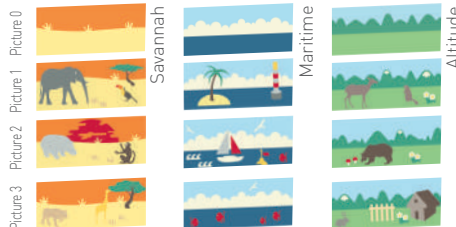


Kidfresc | 3 themes



KIDFRESC

DECORATION AND COVERING FRESCO – 1 MM



APPLICATIONS

The Kidfresc decorative frescoes are especially designed to brighten up and durably protect walls in establishments who hope to create an attractive, welcoming atmosphere that stimulates children's imagination. They meet the constraints linked to the early childhood: hygiene and impact resistance.

DESCRIPTION

- Model: Kidfresc decoration and covering fresco
- Standard dimensions: 2.90 m x 1.20 m indivisible
- Thickness: 1 mm
- Material: translucent PVC-free Bs1d0 fire-rated with image printed on the back
- Surface finish: matt and smooth
- Fixing: adhesive bonding with SPM acrylic glue or SPM multipurpose adhesive sealant. Joints between panels can be made using silicone joints, colour matched to the range
- Colours: 3 themes each with 4 pictures (in predefined colours)

SPECIFICATION

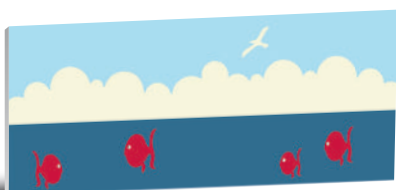
- Description: decoration and covering fresco (Savannah, Maritime or Altitude Kidfresc as manufactured by SPM). From translucent and rigid PVC-free achieving Bs1d0 reaction to fire classification with images printed on the back. Its height is 1.20 m and its length is 2.90 m and is 1 mm thick. A protective film is specified to minimise cleaning before acceptance.
- Environment: no heavy metals and no substance potentially subjected to any REACH restriction are used in its manufacture, nor PBT/BPA. The emission level of volatile substance in inside air has been tested according to ISO 16000-6 and is very low (A+) according to the French regulation (23 March 2011 nr 2011-321 Decree and 19 April 2011 Order). 100% of the product are recyclable.
- Colour: selected by architects from manufacturer's standard range.
- Installation method: glue as per manufacturer's instructions.



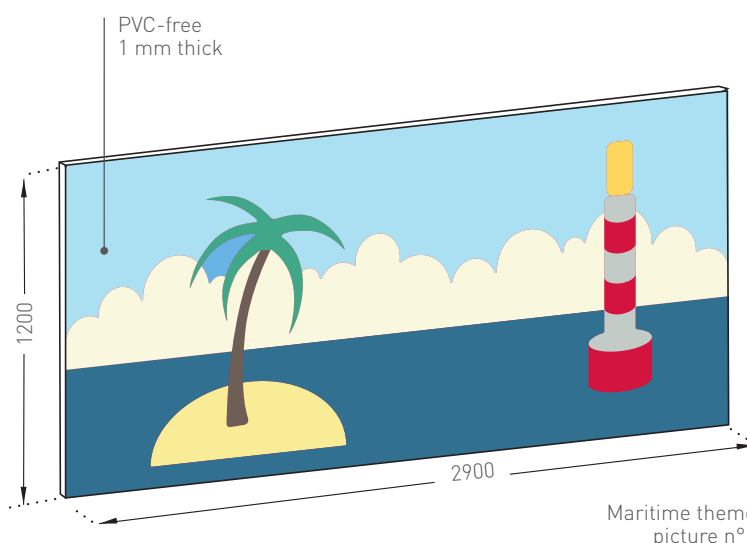
Altitude theme (4 pictures)



Savannah theme (4 pictures)



Maritime theme (4 pictures)



Maritime theme picture n°1

Specifications and section drawings on our website www.spm-international.com



bimobject BimObject in Revit and Archicad